

Height Gage

A standard measuring tool of industry

Linear Height

SERIES 518 — High Performance 2D Measurement System

- Excellent accuracy of $(1.1+0.6L/600)\mu\text{m}$ with $0.1\mu\text{m}/0.4\mu\text{m}$ resolution/repeatability.
- High-accuracy Height Gage incorporating a wide range of measurement functions.
- To achieve best-in-class accuracy, a high-accuracy reflective-type linear encoder and high-accuracy guide are used.
- Measurement can be implemented by icon-based commands that also support easy one-key operation.
- Perpendicularity (frontal) of $5\mu\text{m}$ and straightness of $4\mu\text{m}$ are guaranteed.
- The TFT LCD provides excellent visibility and operability.
- Pneumatic full/semi-floating system allows adjustment of air-cushion height.
- Basic statistical functions are provided and, additionally, RS-232C data output provides the option of evaluating measurement data externally with SPC software on a PC.
- For precision Black Granite Surface Plates, refer to page E-51.
- Backup/Restore of data and measurement part programs can be implemented using USB storage devices (FAT16/32 format compatible).



518-351A-21

With power grip
518-352A-21



SPECIFICATIONS

Inch/Metric	Model without power grip
Order No.	Remarks
518-351A-21	Model for North America, English manual
518-351A-22	Model for South America, Spanish manual
518-351D-21	Model for EU, English manual
518-351E-21	Model for the UK, English manual
518-351DC	Model for China, Chinese manual
518-351K	Model for Korea, Korean manual

Inch/Metric	Model with power grip
Order No.	Remarks
518-352A-21	Model for North America, English manual
518-352A-22	Model for South America, Spanish manual
518-352D-21	Model for EU, English manual
518-352E-21	Model for the UK, English manual
518-352DC	Model for China, Chinese manual
518-352K	Model for Korea, Korean manual

* Power grip pre-installed models



An inspection certificate is supplied as standard.
Refer to page IX for details.

Technical Data

Measuring range: 0 - 977mm
Slider stroke: 600mm
Resolution: 0.0001 / 0.001 / 0.01 / 0.1mm or (switchable) .000001" / .00001" / .0001" / .001"
Accuracy at 20°C*1: $(1.1+0.6L/600)\mu\text{m}$
L = Measuring length (mm)
Repeatability (2σ)*1: Plane: 0.4μm, Bore: 0.9μm
Perpendicularity*2: 5μm (after compensation)
Straightness*2: 4μm (mechanical straightness)
Drive method: Manual / motor (5 - 40mm/s, 7 steps)
Measuring force: 1N
Balancing method: Counter balance
Floating method: Full / semi-floating with built-in air compressor
Display: 5.7-inch color TFT LCD
Language for display: Japanese, English, German, French, Italian, Spanish, Dutch, Portuguese, Swedish, Czech, Hungarian, Slovene, Polish, Traditional Chinese, Korean, and Simplified Chinese
No. of stored programs: 50 (max.)
No. of stored data: 60,000 (max.)
Power supply: AC adapter / battery (Ni-MH)
Battery operation time: Approx. 5 hours
(air floating & slider elevation: 25% duty cycle)

*1 Guaranteed when using the standard eccentric ø5 probe

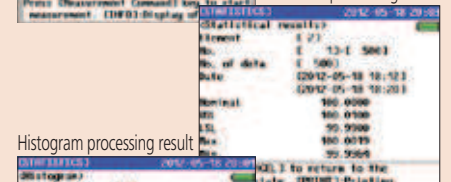
*2 Guaranteed when using the Lever Head (MLH-521) or Mu-checker (M-511)

Screenshot examples

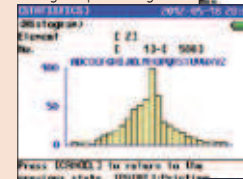
Measurement screen



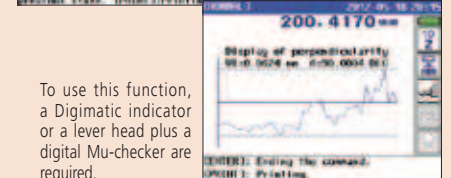
Statistical processing result



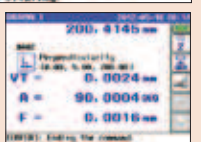
Histogram processing result



Squareness measurement result:
Graphical display



To use this function, a Digimatic indicator or a lever head plus a digital Mu-checker are required.



Squareness measurement result:
Numeric display

Standard accessories

12AAF634 5-stepped probe

12AAA715 Ball-diameter corrected block

*When the correction is performed by using the taper type contact point, the ball-diameter corrected block No. 12AAA787 (for taper type contact point) is required.

12AAF674 Auxiliary weight (2pcs.)

Diagram illustrating various measurement points on a mechanical part:

- Thickness measurement (Outside):** Indicated by a double-headed vertical arrow icon with a 'D' label.
- Height measurement (Upward facing):** Indicated by a downward arrow icon with a '+' label.
- Height measurement (Downward facing):** Indicated by an upward arrow icon with a '-' label.
- Width measurement (Inside):** Indicated by a double-headed vertical arrow icon with a 'C' label.
- Circle measurement (Hole):** Indicated by a circle with a crosshair icon.



Technical drawing of the SMD 1000 floor scale, showing front and side views with dimensions in mm.

Front View Dimensions:

- Overall width: 237 mm
- Base width: 10 mm

Side View Dimensions:

- Overall height: 1013 mm
- Height to top of display: 977 mm
- Height to top of weighing platform: 600 mm
- Height to bottom of display: 262 mm
- Platform depth: 82.5 mm
- Platform width: 288 mm
- Base width: 68 mm

Unit: mm

● For Linear Height and QM-Height ● For Linear Height only ● For QM-Height only



- (1) **12AAC072:** Depth probe
 - (2) **12AAC073:** ø20mm taper probe
 - (3) **12AAA792:** Dial indicator (ø8mm stem) holder
 - (4) **12AAA793:** Probe extension holder (85mm/3.3")
 - **12AAB136:** ø10mm cylindrical probe
 - (6) **932361:** Mu-checker lever head holder*²
additional auxiliary weights are required (total 4 pcs).
 - **12AAF666:** ø1mm ball probe (coaxial type)
 - **12AAF667:** ø2mm ruby ball probe (coaxial type)
 - (8) **957261:** ø2mm ball probe (coaxial type)
 - (9) **957262:** ø3mm ball probe (coaxial type)
 - (10) **957263:** ø4mm ball probe (coaxial type)
 - (11) **12AAB552:** ø10mm ball probe, L = 55mm (coaxial type)
 - **12AAF668:** ø10mm ball probe, L = 82mm (coaxial type)
 - **12AAF669:** ø10mm ball probe, L = 120mm (coaxial type)
 - **12AAF670:** ø5mm disk probe
 - **12AAF671:** ø10mm disk probe
 - (12) **957264:** ø14mm disk probe
 - (13) **957265:** ø20mm disk probe
 - **12AAF672:** ø1mm ball offset probe
 - (14) **12AAA788:** ø4mm ball offset probe
 - ø5mm ball offset probe **No.05HAA394**
 - (15) **12AAA789:** ø6mm ball offset probe
 - (16) **226116:** Test indicator (ø6mm stem) adapter
 - Sample workpiece **No.12AAA879**
 - (17) **226117:** M2 CMM stylus adapter*¹
 - (18) **226118:** M3 CMM stylus adapter*¹
 - CMM ball and disk hard probes are available.
ø2 **No.932377A**, ø3 **No.932378A**
ø5 **No.932379A**, ø6 **No.932380A**
ø10 **No.532328**
Disk probe
ø20 **No.532345**, ø30 **No.930803**
 - **12AAF712:** Battery pack
 - **12AAF675:** Set with cover for large capacity battery*²
 - **12AAG245:** Single large-capacity battery*³
 - Scriber **No.05HZA173**
 - Digimatic Mini-Processor DP-1VR
No.264-504
SPC Cable
No.936937 (1m)
No.965014 (2m)
 - AC Adaptor **No.526688**

- **12AAN048:** Thermal printer
(Attachment for fixing the connecting cable is provided as standard.)
- **12AAN052:** Thermal printing paper (10 pcs.)
- **12AAA804:** Cable for page printer (2m)
- **12AAA807:** RS-232C cable (2m/80")
- **12AAG920:** RS-232C cable (3m/1'18")
- Digimatic cable
No.936937 (1m)
No.965014 (2m)

- D-56